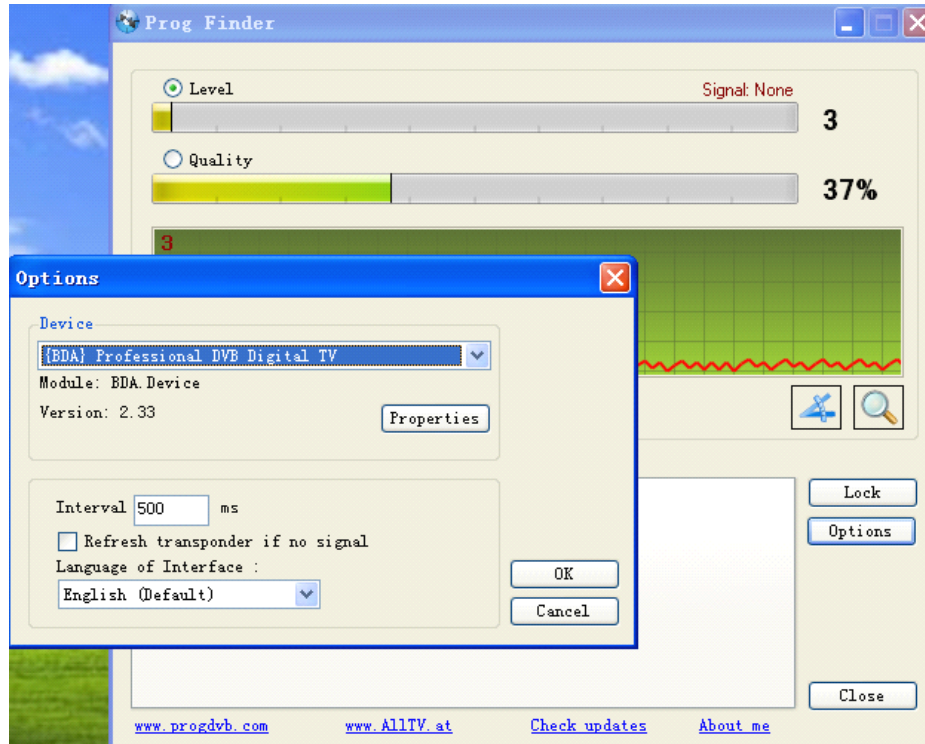


ProgFinder Setting for DVBSky S2 Card/Box

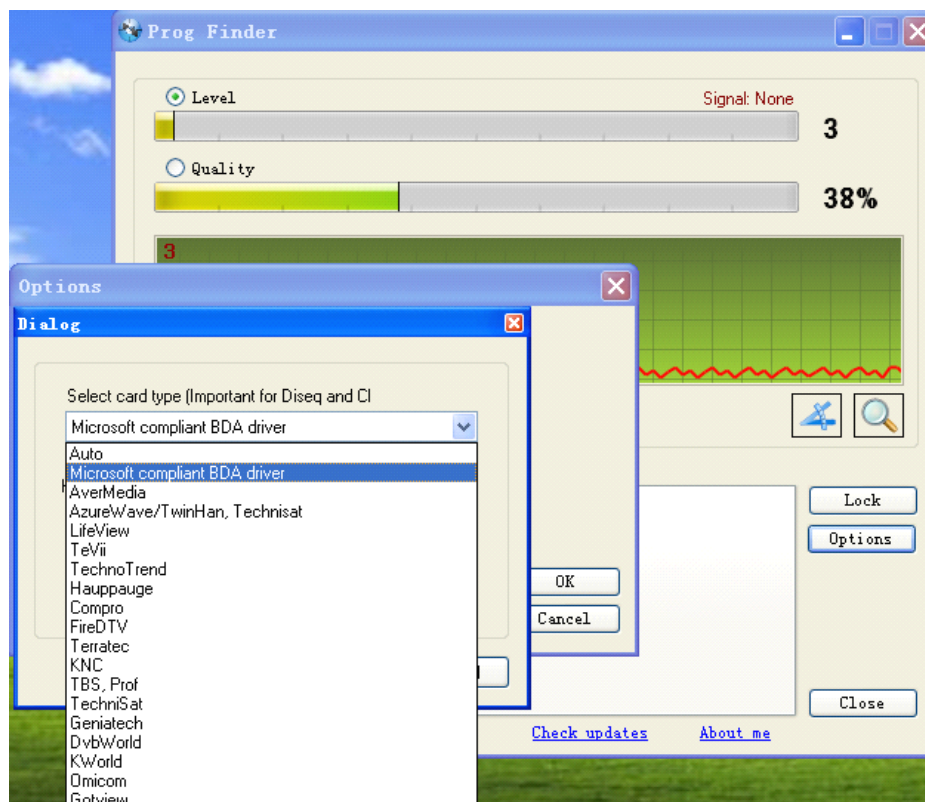
(Apply for ProgFinder 2.27 above)

Options Settings

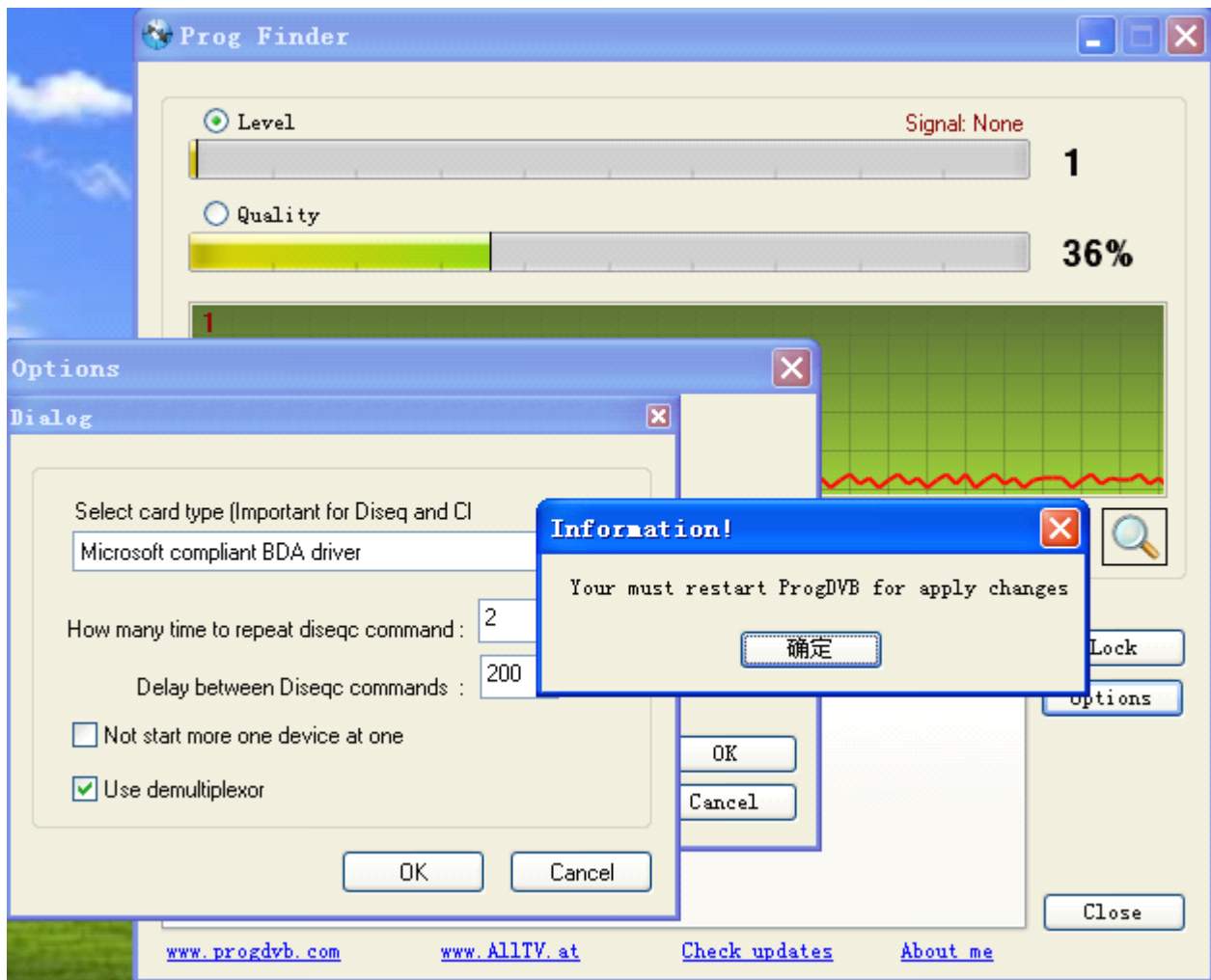
1) Click Options button, enter Options configure page.



2) Click Properties button, select Microsoft compliant BDA driver.

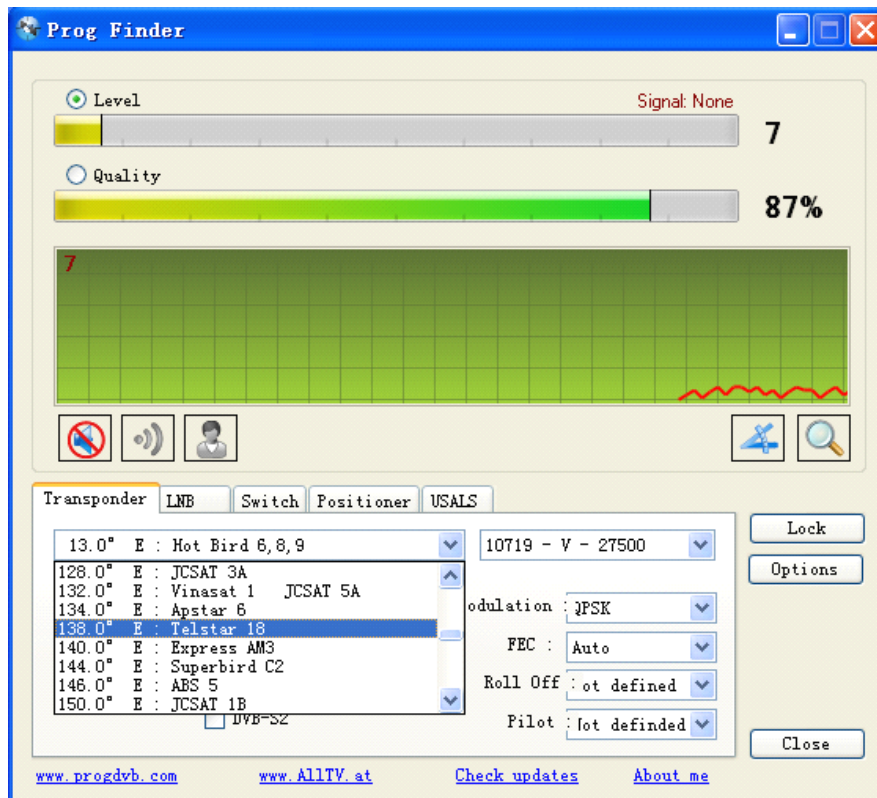


3) Click OK, then restart ProgFinder.

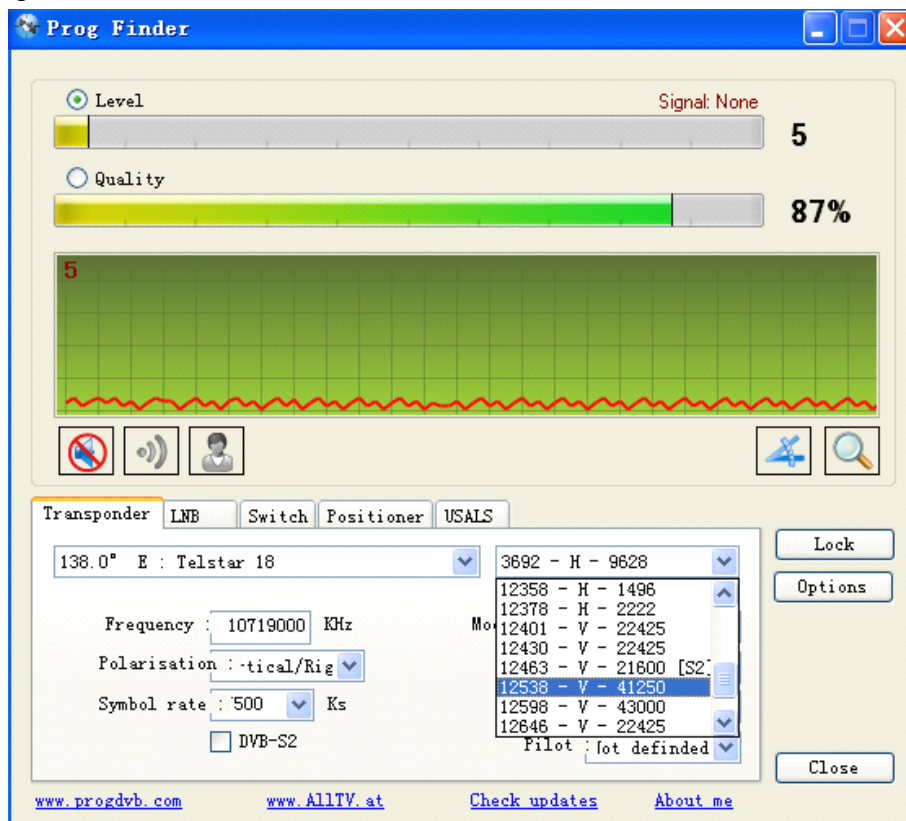


Transponder Settings.

1) Select the Satellite.

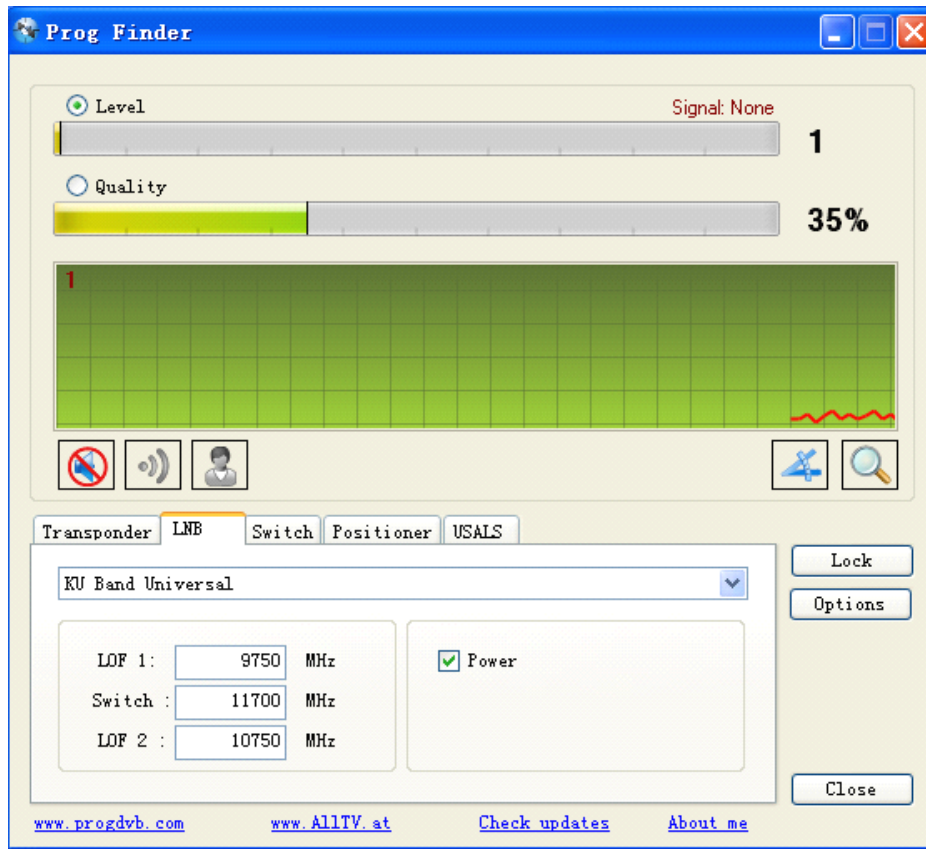


2) Select the transponder.



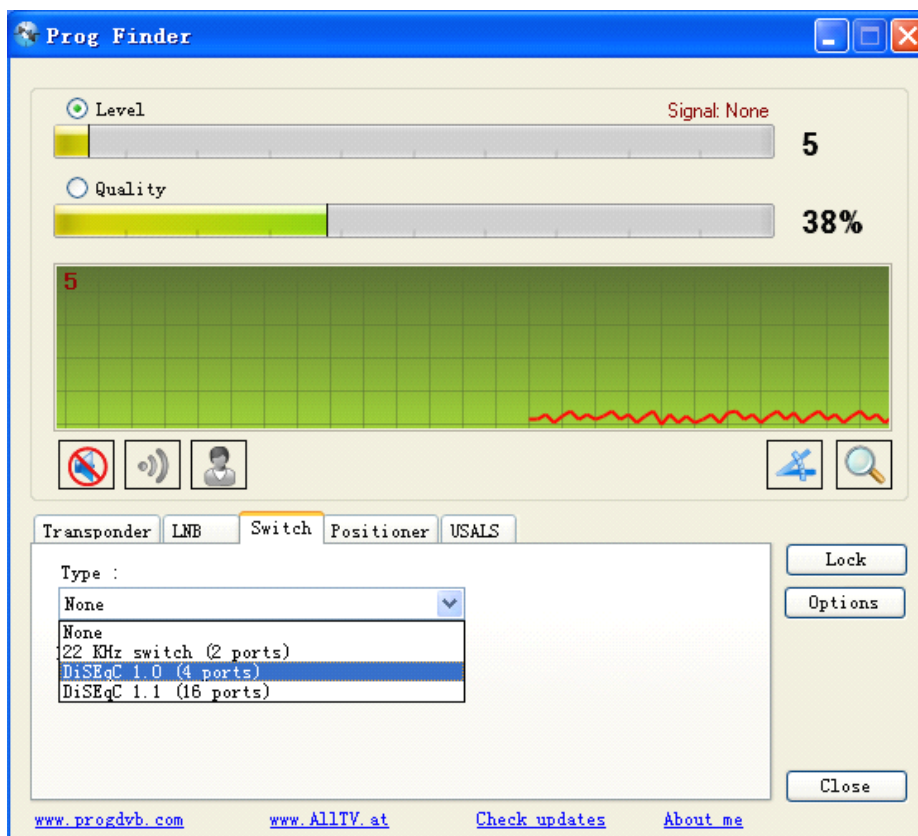
LNB Setting

Enter LNB argument, you can find them on the LNB print.

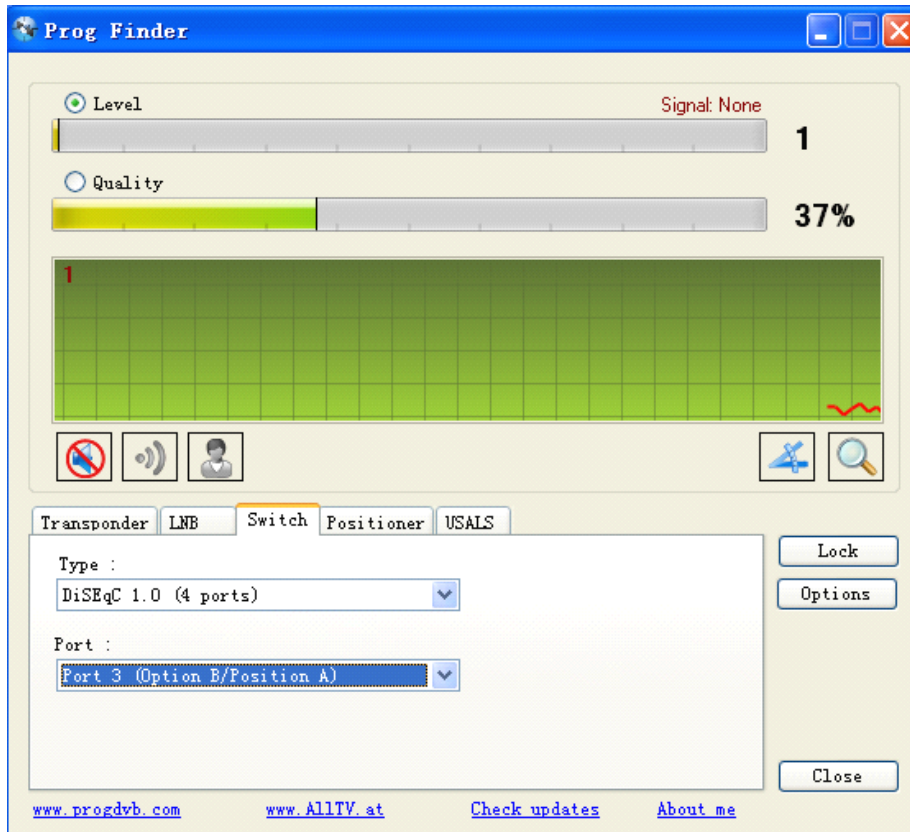


LNB Switch Setting

1) Select the type of Switch, if no switch connected then select None.



2) If Switch here, select the port of LNB switch.



After all done, click Lock button to try to lock signals.

Meanwhile, click  to open Voice indication.